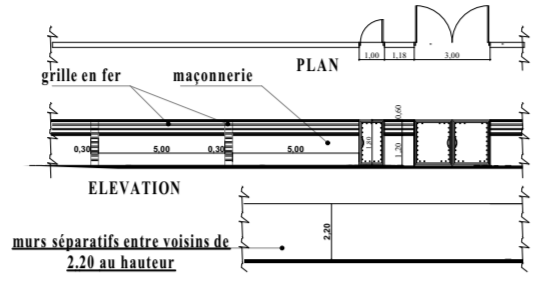
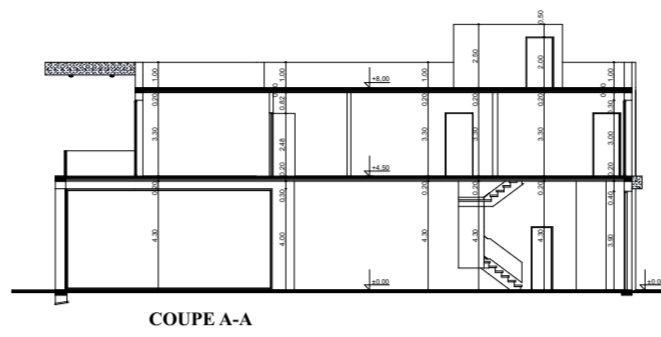
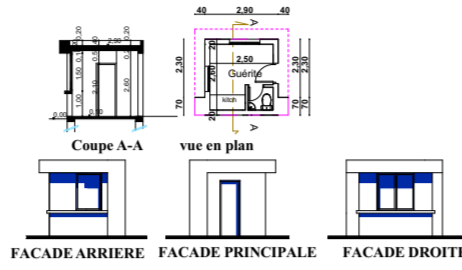


SITUACTION

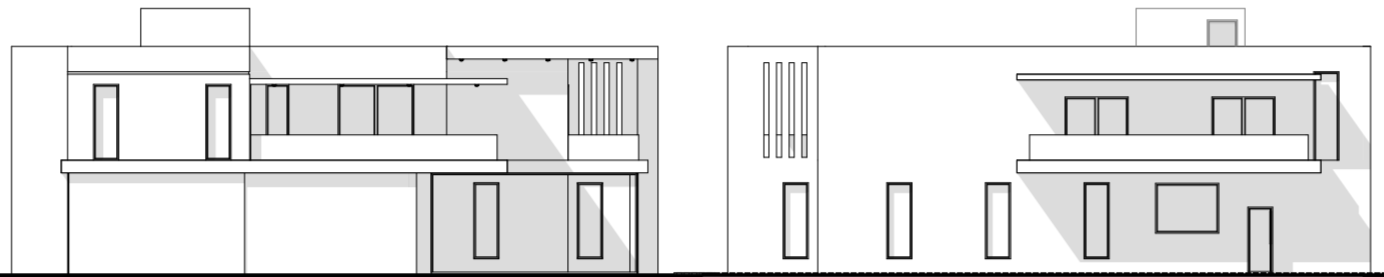
MUR DE CLOTURE



GUERITE

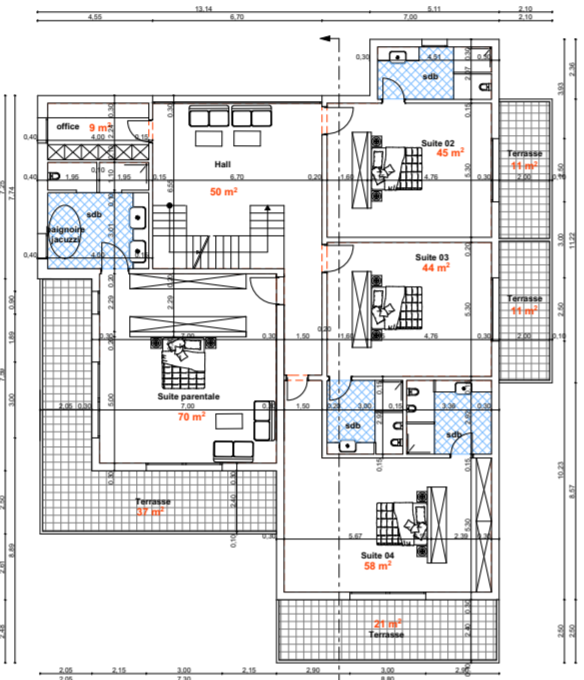


COUPE A-A

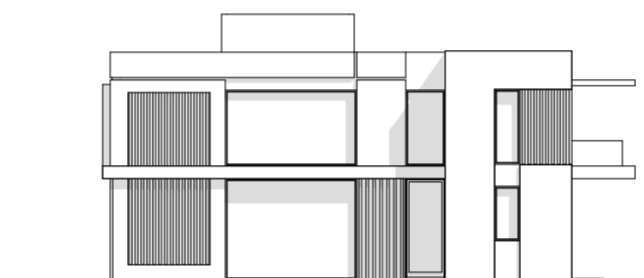


FACADE ARRIERE

FACADE PRINCIPALE



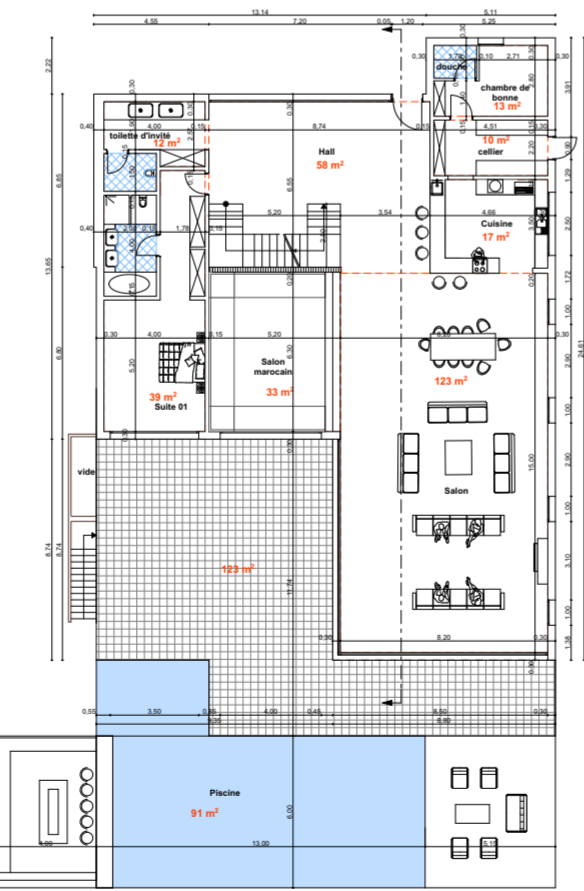
ETAGE SURFACE 395.00 m²



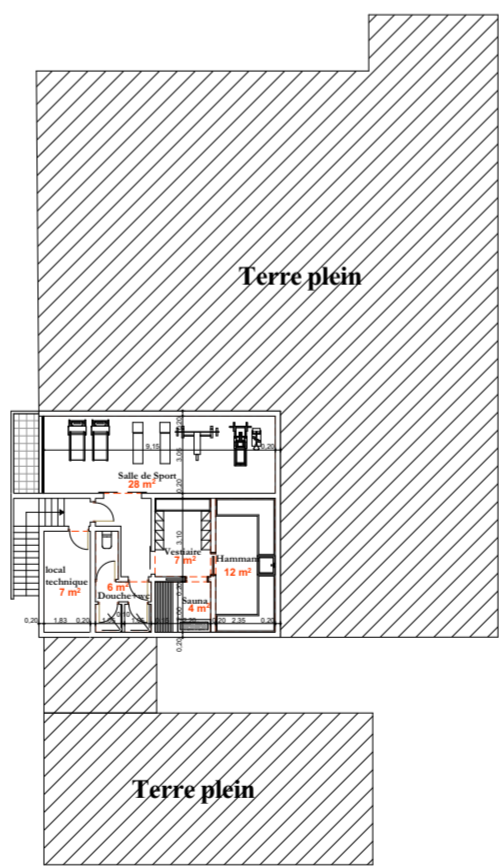
FACADE DROITE



FACADE GAUCHE

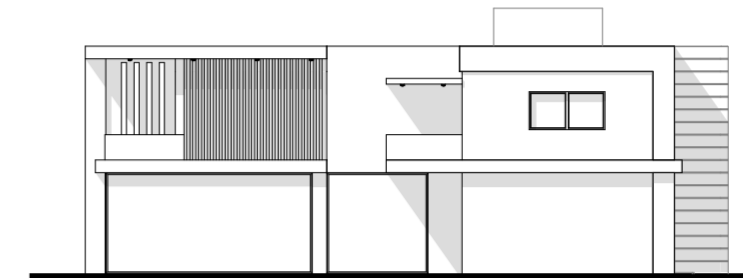


REZ DE CHAUSSEE SURFACE 337.00 m²

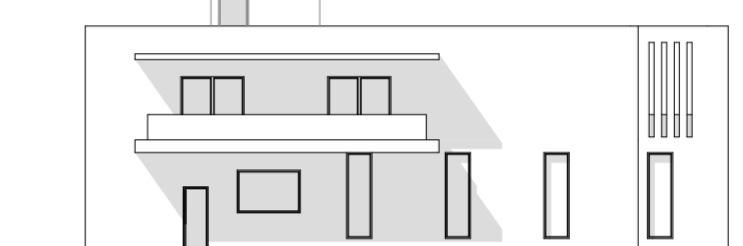


SOUS SOL SURFACE 85.00 m²

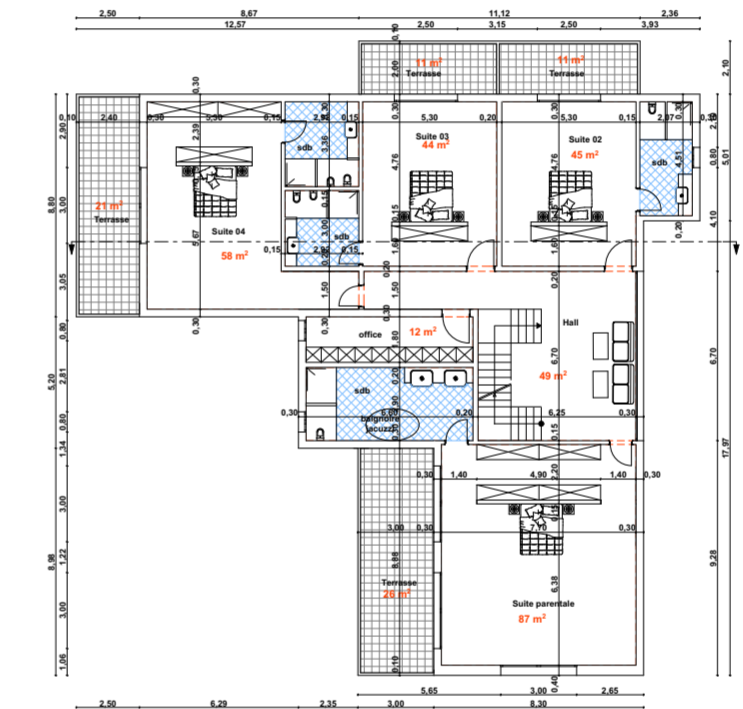
TYPE 01



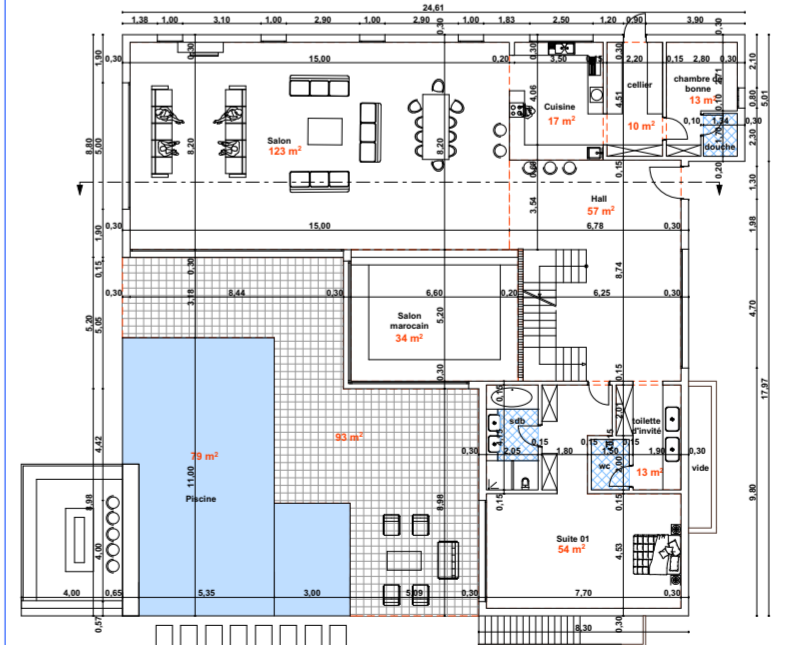
FACADE GAUCHE



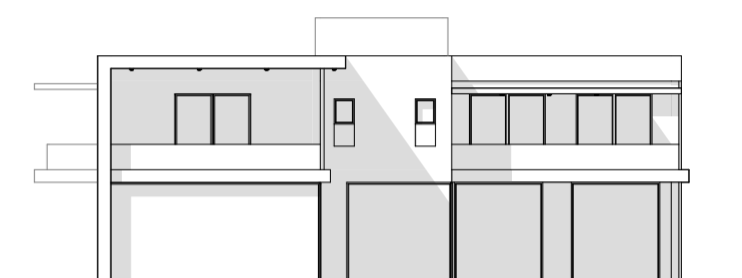
FACADE DROITE



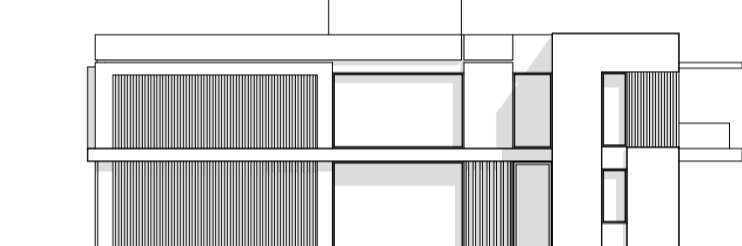
ETAGE SURFACE 404.00 m²



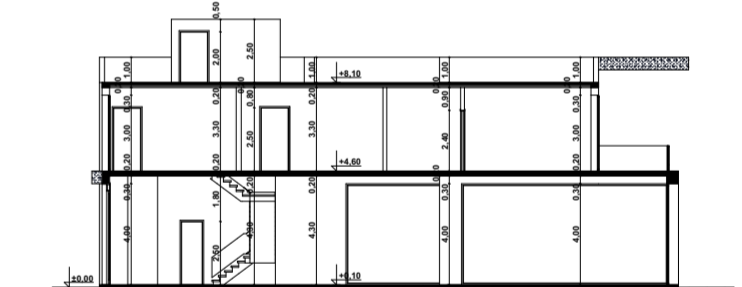
REZ DE CHAUSSEE SURFACE 354.00 m²



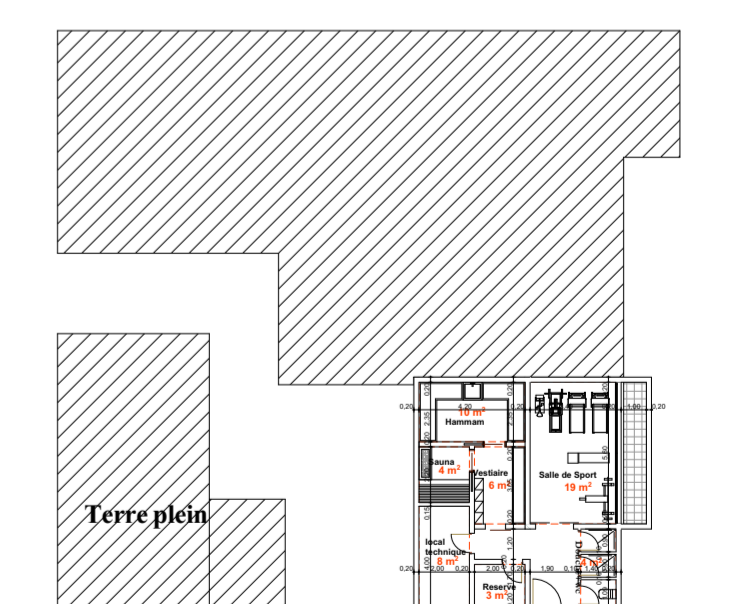
FACADE ARRIERE



FACADE DROITE



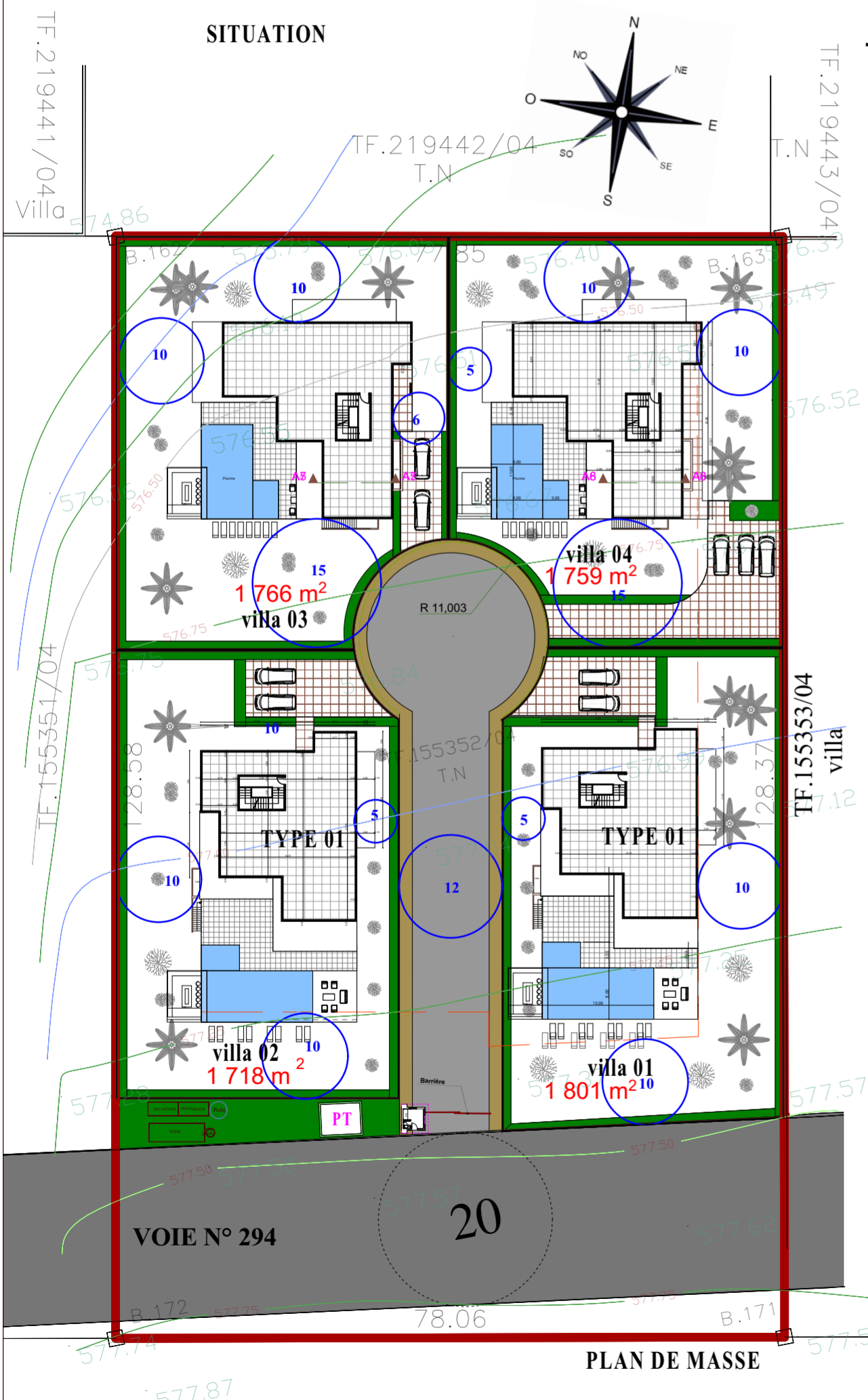
COUPE A-A



SOUS SOL SURFACE 76.00 m²

TYPE 02

ROYAUME DU MAROC PREFECTURE DE MARRAKECH COMMUNE TASSOULTANTE		
Projet: CONSTRUCTION D'UN GROUPEMENT D'HABITATION DE 04 VILLAS Dans le cadre de l'article 45 de la loi 25_90		
Situation: Propriété dite: Ferdouss 2 T.F.: 155352/04		
Nora Drals Architecte Quartier Matmorocco, Rabat, Maroc Tél: 05 37 77 77 77 E-mail: nora@nora.ma		Maître d'ouvrage: Société CELESTE VALLEY SARL Représentés par Mme KIM BACH
Contenance:	Planche: 1	Echelle: 1/100
Plans - Elevation - Coupe		Date: JUN 2023
Plan de masse - Plan de situation		
Designation:	Remarques:	Date:



PLAN DE MASSE